



WiFi: UoL - Visitor



# Welcome to the Regional Collections Symposium

University of Lincoln  
Thursday 5<sup>th</sup> March 2020

**@MusDevEM**

**#RCS20**

# The Regional Collections Programme



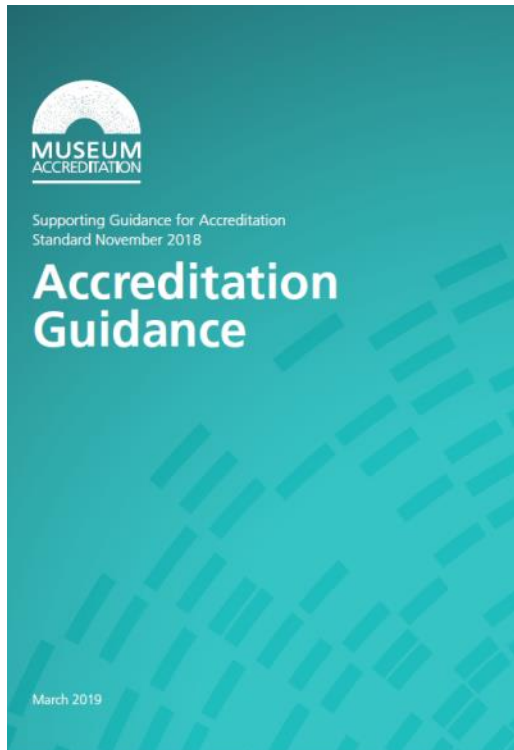
# **The Regional Collections Programme**

- **Collections enquiry service**
- **Advisory visits**
- **Collections Access Grants**
- **Funding advice**
- **Training**
- **Emergency and risk support**
- **Banish the Backlog**
- **Regional Collections Symposium**

# Collections Enquiry Service



# The Museum Accreditation Scheme



- Collections Development Policy
- Care & Conservation Policy
- Care & Conservation Plan
- Documentation Policy
- Documentation Plan
- Documentation Procedural Manual

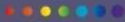
**Disposals Toolkit for museums:**

**<https://www.museumsassociation.org/download?id=1075416>**

Collections Trust



# Spectrum



The UK Museum Collections  
Management Standard

Spectrum 5.0



Supported using public funding by  
**ARTS COUNCIL  
ENGLAND**

Collections Trust



# Spectrum



The UK Museum Collections  
Management Standard

Spectrum 5.0 Appendix - Information Requirements



Supported using public funding by  
**ARTS COUNCIL  
ENGLAND**

# Advisory Site Visits





# Specialist Conservators



- Advisory visits
- Reports
- Training
- Funding

# Collections Access Grants



# Funding Advice



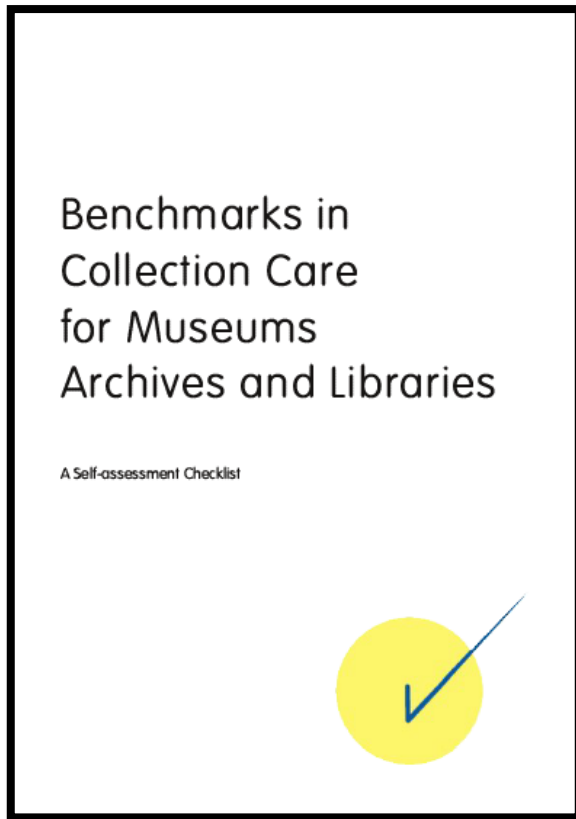
# Training – Regional Collections Adviser



- **Introduction to Collections Care**
- **Safe handling, packing and storage**
- **Housekeeping and cleaning**
- **Environmental Monitoring**
- **Marking and labelling**
- **Accreditation - collections**



# Benchmarks in Collection Care



*Museums will find the publication **Benchmarks in Collection Care 2.0** a useful tool for assessing their current collections care and conservation plans and procedures...*

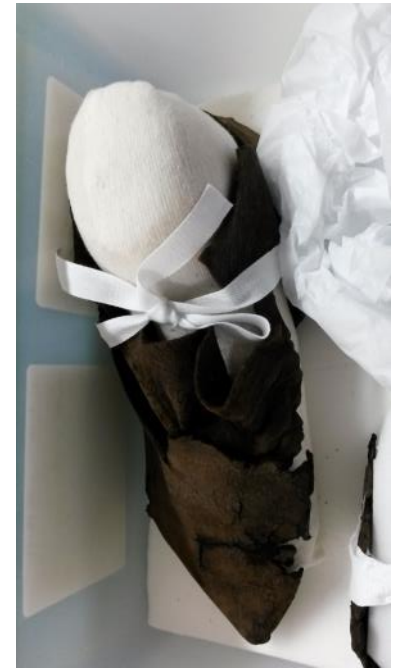
<http://collectionstrust.org.uk/resource/benchmarks-in-collections-care-2-0/>

## b) Benchmarks in Collection Care

- Policy
- Buildings
- Storage
- Housekeeping
- Handling and Use
- Environmental Monitoring
- Environmental Control
- Conservation
- Surrogates
- Emergency Preparedness



# Training - Conservation Department at the University of Lincoln



**Preservation of Archaeological Collections**  
**Care of Metals**  
**Care of Photographs**



# Training – Collections Trust



- Rationalisation
- Rights Management and Copyright



# Upcoming MDEM Collections Training

- **Digital Storytelling with a collections focus**, 2<sup>nd</sup> April at the National Civil War Centre (Culture 24)
- **When the Worst Happens: Artefact salvage and care in the aftermath of a major incident**, 29<sup>th</sup> April at RAF College Cranwell (Emma Dadson, Harwell)
- **Caring for framed collections**, 12<sup>th</sup> May at the National Civil War Centre (Caroline Oliver)

# The new Emergency and Risk Network and associated support programme is...

...an initiative run by MDEM that builds on the legacy of the Regional Emergency Disaster Squad (REDS) service offered by East Midlands Museums Service (EMMS).

EMMS legacy funding and Arts Council funding for MDEM ensures museums of all types and sizes can access support from this programme for 3 years - until March 2022.



Supported using public funding by  
**ARTS COUNCIL  
ENGLAND**

# The new Risk and Emergency Preparedness Programme

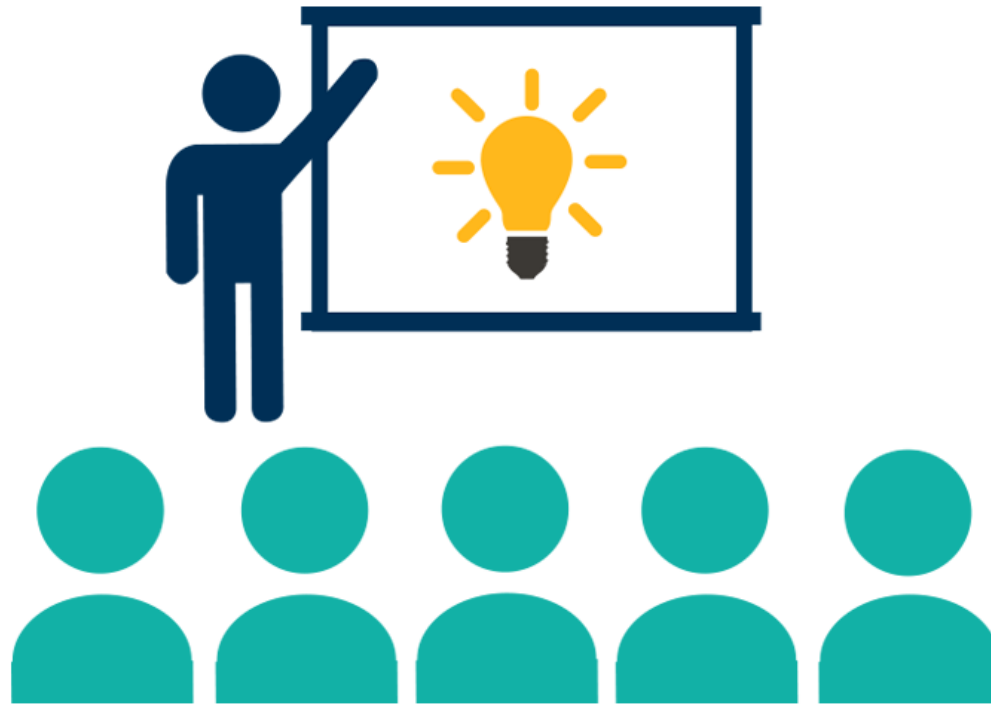
1. Emergency Risk Network (ERN)
2. Training and workshops
3. County Forum support
4. Emergency Planning resources
5. Access to specialist advice

# 1. Emergency Risk Network (ERN)

For interested staff and volunteers to come together twice a year to share best practice and expertise as well as to shape future resources and access peer support



## 2. Training and workshops



# 3. County Forum Support

- A 2-hour emergency preparedness session for each of the county forums led by the Regional Collections Adviser
- Ongoing training and advice during the programme



# 4. Emergency Planning resources



## SUPPORT & GRANTS

Support & Grants

Development Support 2018-2022

Networks

Emergency and Risk Support

Emergency and Risk Resources for Museums

Grants

Business Diagnostic 2018-22

Development Support 2015 – 2018

## EMERGENCY AND RISK RESOURCES FOR MUSEUMS

### WHAT ARE THE RISKS TO MUSEUMS?



## COMING UP

**MAR**  
**15**  
Fri

**11:00 am** Risk and  
Emergency  
Preparedness ...  
@ Derby Museum

**MAR**  
**18**  
Mon

**10:00 am** Care of  
Metals  
@ Buxton Museum  
and Art Gallery

## KEEP IN TOUCH



To keep up to date, sign up  
for our **e-newsletter**



Follow us on Twitter



Welcome to the

# Hazards in Collections

eTool

This tool will help you learn about commonly encountered health hazards found in some museum collections.

[CONTINUE](#)



# 5. Access to specialist advice

Regional Collections Adviser  
**Anita Hollinshead**

[anitahollinshead@hotmail.com](mailto:anitahollinshead@hotmail.com)

07876 166742

[www.mdem.org.uk](http://www.mdem.org.uk)

